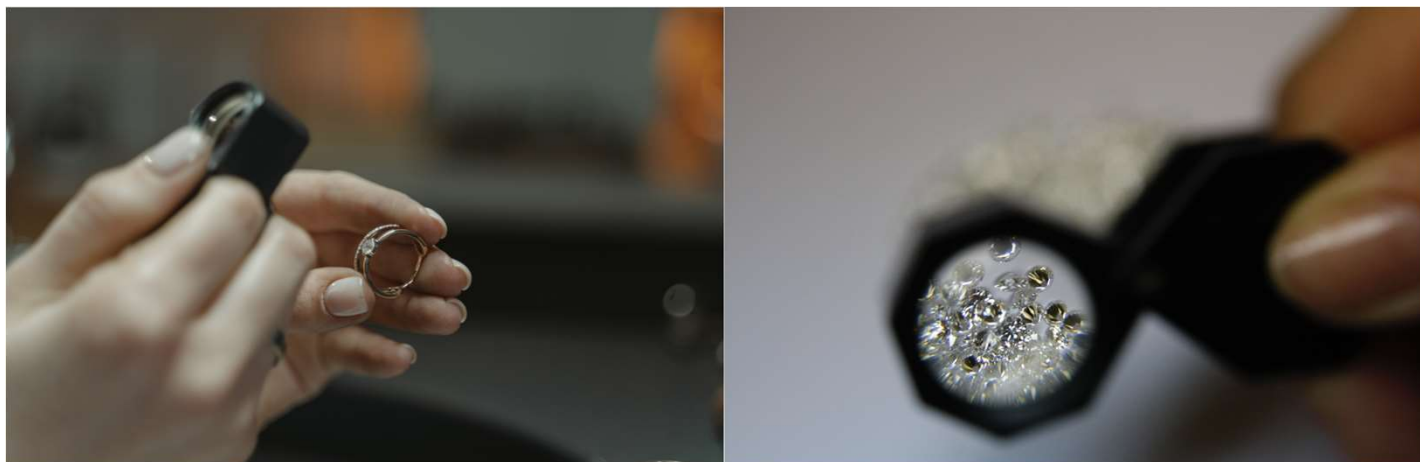


# NEWS LETTER



## ALFAMIRAGE Co., Ltd.

### *Jeweler's Loupe*



Loupes are your most important tools, when examining marks on jewelry or the quality of gemstones, or anything small (stamps, coins, insect & plant samples, and so on...)

Loupes come in many varieties such as eye-loupe held by eye socket & loupes worn like eyeglasses or clipped onto glasses.

For gemologists, the 10X loupe is the standard for hand-held gem identification. We would like to introduce useful information about Jeweler's loupe.

### **Magnification: What's the best magnification for jeweler's loupes?**



Most common type is **10X** magnification, but depending on the application, **14X** or **20X** are also widely used when you check for inclusion, cracks, impurities, hearts and arrows, etc.

The higher the magnification, the smaller the diameter of the lens.

Vision tends to be dark through the lens.

In that case, small light sources such as penlight help you a lot for bright vision.

In addition, the focal distance between loupes and the object becomes shorter, so the workability becomes poor.

However, there is an advantage that you can see some areas that cannot be seen with 10X.

## Lens Configuration: What are Achromatic Lens & Triplet Lens?



“Single lens” contains just one lens; “Doublet” contains two, “Triplet” contains three and “Five element” contains five.

These lenses (elements) are placed on top of each other, and each corrects for the distortions of the previous. By putting multiple lenses together, "chromatic aberration (difficulty in seeing)" is corrected in pursuit of better vision.

Lenses with more than one lens laminated together are more severely corrected, resulting in sharper and clearer vision.

### Example of Lens Configuration

#### Achromatic lens

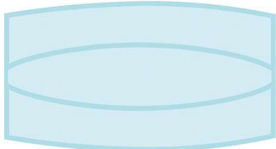


Two glass lenses with different refractive indices (a convex lens and a concave lens) are put together to correct the focus to a single point.



Convex lens + concave lens = **achromatic** (convex-concave)

#### Triplet lens



A lens with three lenses put together for even greater focus correction than achromatic lenses. This lens is recommended for jewelry appraisal.



Achromatic (concave-convex) + other lens (concave)  
= **triplet** (concave- Convex-concave)

## Color of lens frame: What is the difference between black & silver?



When looking at a gemstone, if the lens frame is silver (uncoated), the reflection of the round ring of the lens frame may bother you when you look through the lens at the gemstone, or the reflected light may enter your eyes and make the contrast look wrong in many cases. In order to prevent such reflections, the lens frame, and the body itself are painted black.

Loupes with coated black body is better, but some loupes in cheap price range are struggling to find a balance between cost and visibility and make it unpainted.

## Lens diameter: It effects the brightness & field of view



Loupe Bausch & Lomb 10X

Lens  $\phi$ 15.8 mm

Loupe Bausch & Lomb 14X

Lens  $\phi$ 12.5 mm

With 3.3 mm difference in lens diameter,  
**field of view** and **brightness** differ significantly.

Lens diameter is related to **brightness** and **field of view**.

The larger the lens, the more light can pass through it, and making it look brighter. Also, the larger the field of view, the easier it is to see where you are looking at.

✂The higher the magnification, the smaller the lens diameter becomes and the darker the field of view becomes.(About 20.5 mm is the maximum for 10X).

However, the size of the lens is directly related to the price and weight.

Considering the weight, it can be said that smaller lenses are lighter and easier to carry around.

## Our Product line-up: Made in Japan & Triplet Lens.



Loupe 8800 Series

### LOUPE 8800 SERIES

Most popular 10X, 18mm triplet jewelry loupe throughout the world. Clear and easy focus Japanese lens helps your operation. Loupe 8800 series has been one of the most favor products for ALFA MIRAGE customer for many years.

Item Code	106-023	106-022	106-024
Model	8800-S	8800-B	8800-SB
Magnification	10X		
Lens	18 mm / Triplet		

Made in Japan

### LOUPE 6011 SERIES

The traditional hexagonal loupes from Japan. Wide lens 20.5mm view for easy inspection of diamond, gem and jewelry. Clear and easy to see with Japan-made triplet lens.

Item Code	106-020	106-021	106-028
Model	6011-B	6011-SB	6011-M
Magnification	10X		
Lens	20.5 mm / Triplet		

Made in Japan



Loupe 6011 Series

Reasonable Price range: Made in Japan & Distortion free.



### LOUPE RUPER SERIES

Reasonable and high quality guaranteed. Distortion free double glass loupes.

Item Code	106-025	106-026	106-027
Model	R10-3	R21-3	R31-3
Magnification	10X	10X	8X
Lens	15 mm / Double	21 mm / Double	28 mm / Double

Made in Japan

30X high magnification Loupe.



### LOUPE 30X

30X high magnification loupe enables you to read description of diamond girdle.

Item Code	106-144
Model	ALA-30
Magnification	30X
Lens	8 mm / Achromatic
Weight / Dimensions	24 g / 40 x 21 x 19 mm

Made in Japan

As expected from Nikon this is a top quality lens; the image is crisp and bright with no obvious distortion.



### LOUPE NIKON 10X

World's well-known brand for camera and optics producing this high quality jeweler's loupe. Nikon triplet 10X, 13mm diameter loupe provides edge to edge viewing without any distortion.

Item Code	106-001
Magnification	10X
Lens / Focal Length	13 mm / Triplet / 25 mm
Weight / Dimensions	15 g / 42 x 24 x 16 mm

Made in Japan

Exclusive high-grade white glass lens for professional use. Made in Japan.



### LOUPE PRO 10X

Developed as high-end Jewelry loupe, with high class Steinheil Triplet lens. Lens is non-coated and small color difference can be distinguished.

Item Code	106-072
Magnification	10X
Lens	18 mm / Triplet (Steinheil) High class glass lens (Non-coat)
Resolving Power	More than 67 pcs / mm

Made in Japan



Schneider loupe has an international reputation for its high depth of focus and outstanding field of vision.



Loupe Schneider 10X

## LOUPE SCHNEIDER 10X

The most exclusive 10X magnification power hexagonal loupe on the market. Outstandingly clear lens, distortion free from every angle. Ideal loupe for jewelry, gems and diamond.

Item Code	106-176
Magnification	10X
Lens	18 mm / Achromat-Aplanat
Weight / Dimensions	32 g / 17 x 60 x 16 mm

Bausch & Lomb is one of the world's most famous brands in the jewelry loupe industry.



Loupe Bausch & Lomb 10X

Loupe Bausch & Lomb 14X

## LOUPE BAUSCH & LOMB HASTINGS

Hastings Triplet Magnifiers incorporate three separate lenses, bonded together to form a compound lens to provide sharp, very distinct magnified image without distortion. Sometimes these are referred to as "Jeweler's Loupes".

Item Code	106-002	106-003
Magnification	10X	14X
Lens	15.8 mm / Triplet	12.5 mm / Triplet
Weight / Dimensions	14 g / 20 x 48 x 18 mm	9 g / 16 x 39 x 17 mm

Loupe with LED light.



LED Loupe

## LOUPE eye PRO LED

Loupe with LED lights MRL series. Easy inspection with detail parts with LED light. It comes with battery lid open jig.

Item Code	106-063	106-073	106-074
Model	MRL-106	MRL-144	MRL-204
Magnification	10X	14X	20X
Lens	18 mm / Achromatic	11 mm / Achromatic	
Weight / Dimensions	60 g / 19 x 82 x 25 mm	31 g / 21 x 70 x 19 mm	30 g / 21 x 70 x 19 mm
Battery	LR926 battery x 3		

 ALFAMIRAGE CO., LTD.

3-2-19, MIYAKOJIMAHONDORI MIYAKOJIMA-KU, OSAKA 534-0021, JAPAN  
 TEL : +81 6 6924 2631 FAX : +81 6 6924 2044  
 E-mail: [sales@alfamirage.com](mailto:sales@alfamirage.com)  
 Website: <https://www.alfamirage.com>